

A woman with her hair in a bun, wearing a vibrant red sequined dress with a large backless cutout, stands on a rooftop. She is looking over her shoulder towards the camera. The background is a vast, hazy city skyline with numerous skyscrapers under a soft, overcast sky. The scene is framed by a dark metal railing in the foreground.

# FILM & PHOTO



ROCKEFELLER CENTER®

INSPIRING FILMMAKERS,  
PHOTOGRAPHERS,  
AND ARTISTS ALIKE...



YOUR NEXT LOCATION  
ROCKEFELLER  
CENTER



TO CAPTIVATE  
AUDIENCES ALL OVER  
THE WORLD.

FROM INTIMATE SPACES  
AND ROOFTOP TERRACES,  
TO ICONIC BACKDROPS...



# LOCATION IS EVERYTHING



THESE LOOKS IMBUE AN  
AUTHENTIC NEW YORK  
TO EVERY SCENE.

IF YOU ARE LOOKING FOR  
A CHRISTMAS SETTING,  
LOOK NO FURTHER...



# QUINTESSENTIAL CHRISTMAS

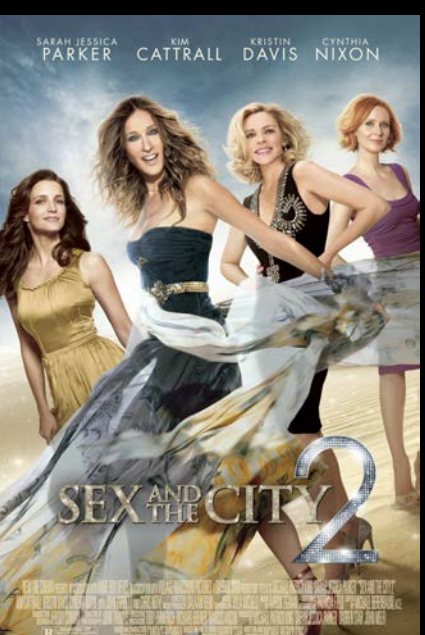
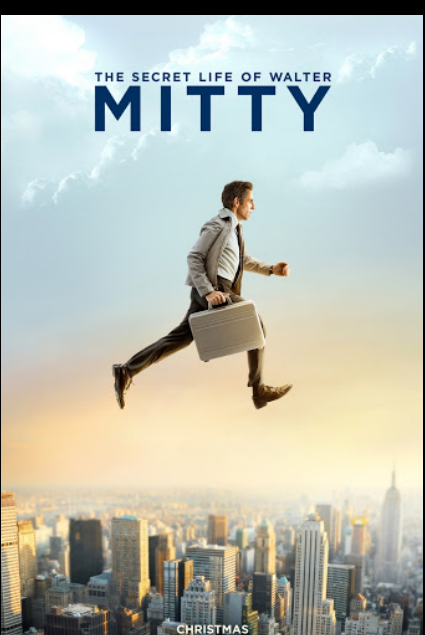
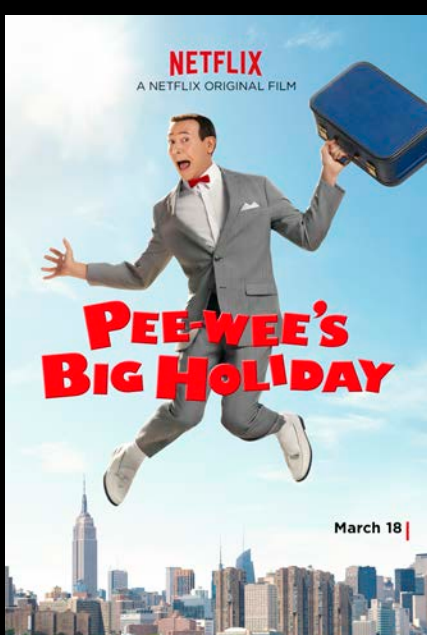
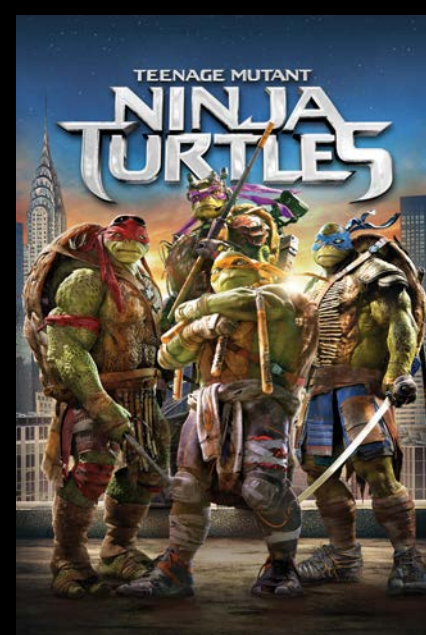
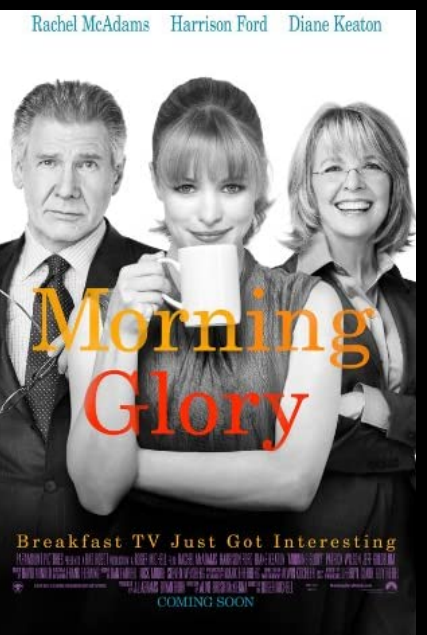
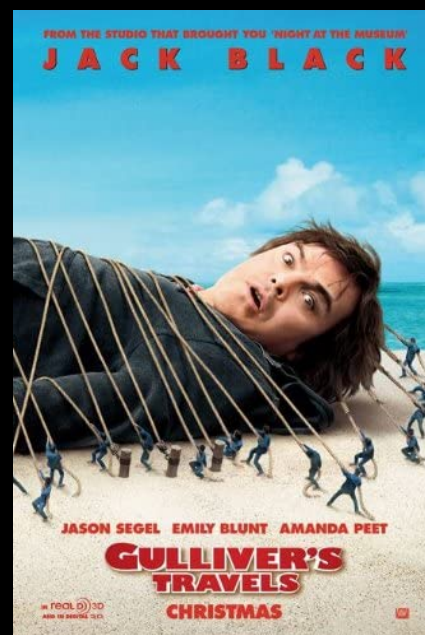
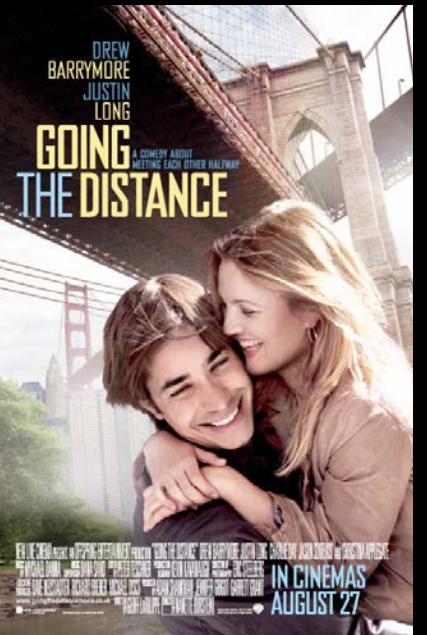
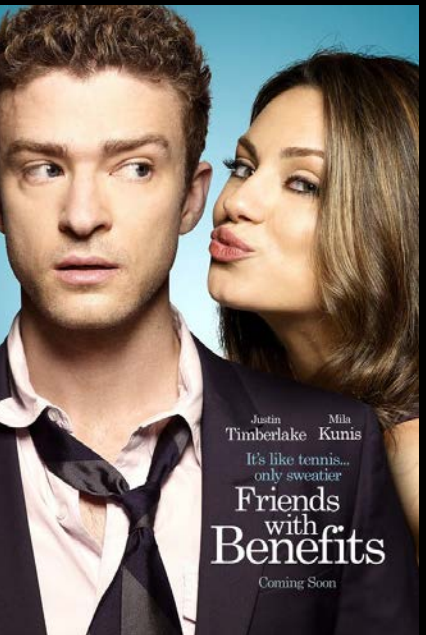
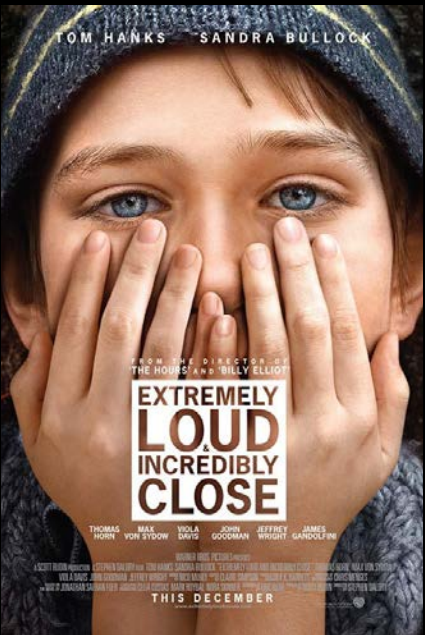


OUR CHRISTMAS TREE IS  
THE PERFECT BACKDROP  
FOR SEASONAL SHOOTS.



# PORTFOLIO

# FILM PRODUCTION



# PRINT ADVERTISEMENTS & EDITORIAL



# TELEVISION & STREAMING

America's  
got Talent

Apple tv+

BILLIONS

BLOODTIES

BROAD  
CITY

CHICAGO  
P.D.

ellen

GOLDEN  
GLOBE  
AWARDS®

HBOmax

JESSICA  
JONES

LAW & ORDER  
SPECIAL VICTIMS UNIT

LATE  
NIGHT  
WITH  
SETH  
MEYERS

The  
Marvelous  
Mrs.  
Maisel

NETFLIX

NIGHTLY  
NEWS  
WITH LESTER HOLT

ODD  
SQUAD

peacock

prime

project  
RUNWAY

the Real  
Housewives  
OF NEW YORK CITY

SATURDAY  
NIGHT LIVE

123  
SESAME STREET

SMASH

sneaky  
pete

SUCCESSION™

THE  
CARRIE  
DIARIES

THE  
TONIGHT  
SHOW  
STARRING  
JIMMY  
FALLON

TODAY



# LOCATIONS



# TOP OF THE ROCK

The best views in town. Soaring seventy floors high, Top of the Rock's three levels of indoor and outdoor observation decks deliver spectacular, unobstructed 360-degree vantages of the city skyline, no matter the weather or time of year. Inside, more memorable production spots ensure you'll get the most out of any shoot: an ultra-modern "Breezeway" kitted out with flashing technicolor lights; the Grand Atrium Lobby, with its dazzling crystal Joie Chandelier; and the three-dimensional Radiance Wall, made of Swarovski crystal clusters and geodes.

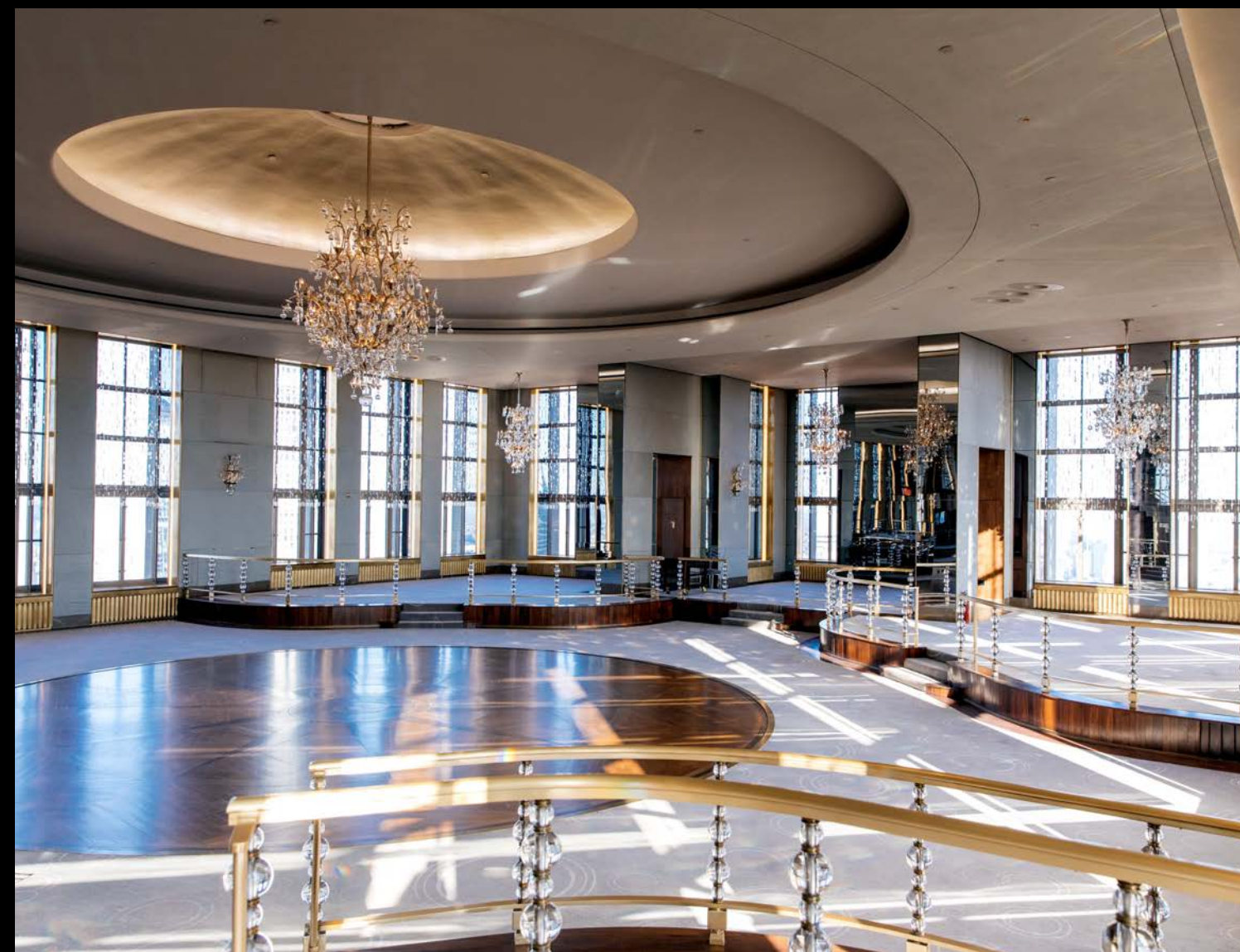
30 ROCKEFELLER PLAZA  
67TH, 69TH & 70TH FLOOR  
CEILING HEIGHT: THE SKY



# RAINBOW ROOM

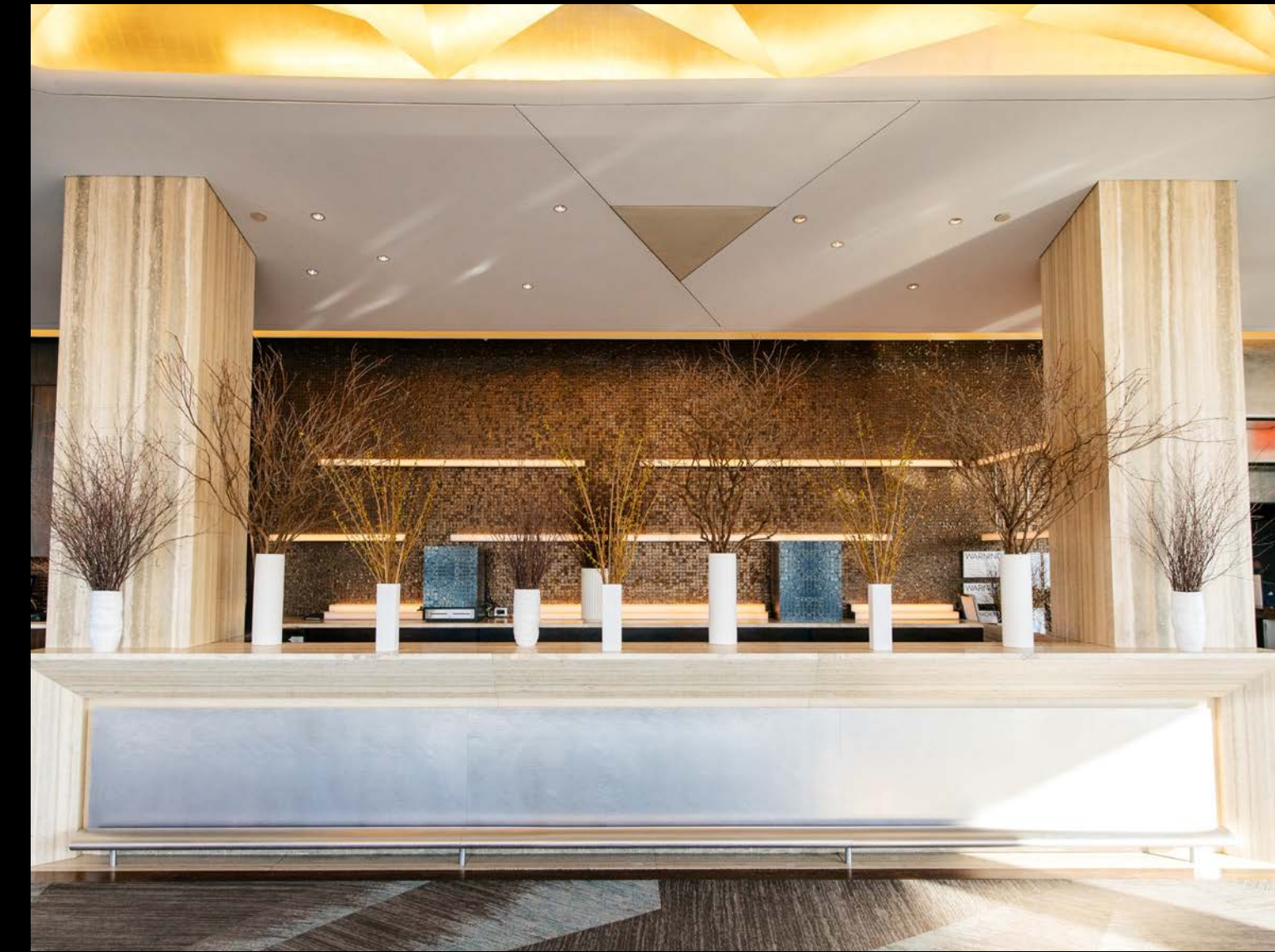
One of the city's most storied and glamorous outposts, this Art Deco palace was designed for only-in-New York nights: think clinking champagne flutes, big band music, and a twinkling Manhattan skyline gleaming through floor to ceiling windows. The landmarked rotating dance floor allows for extraordinary staging in an already rare setting.

30 ROCKEFELLER PLAZA  
65TH FLOOR  
SQ FT: 4,464  
CEILING HEIGHT: 18'

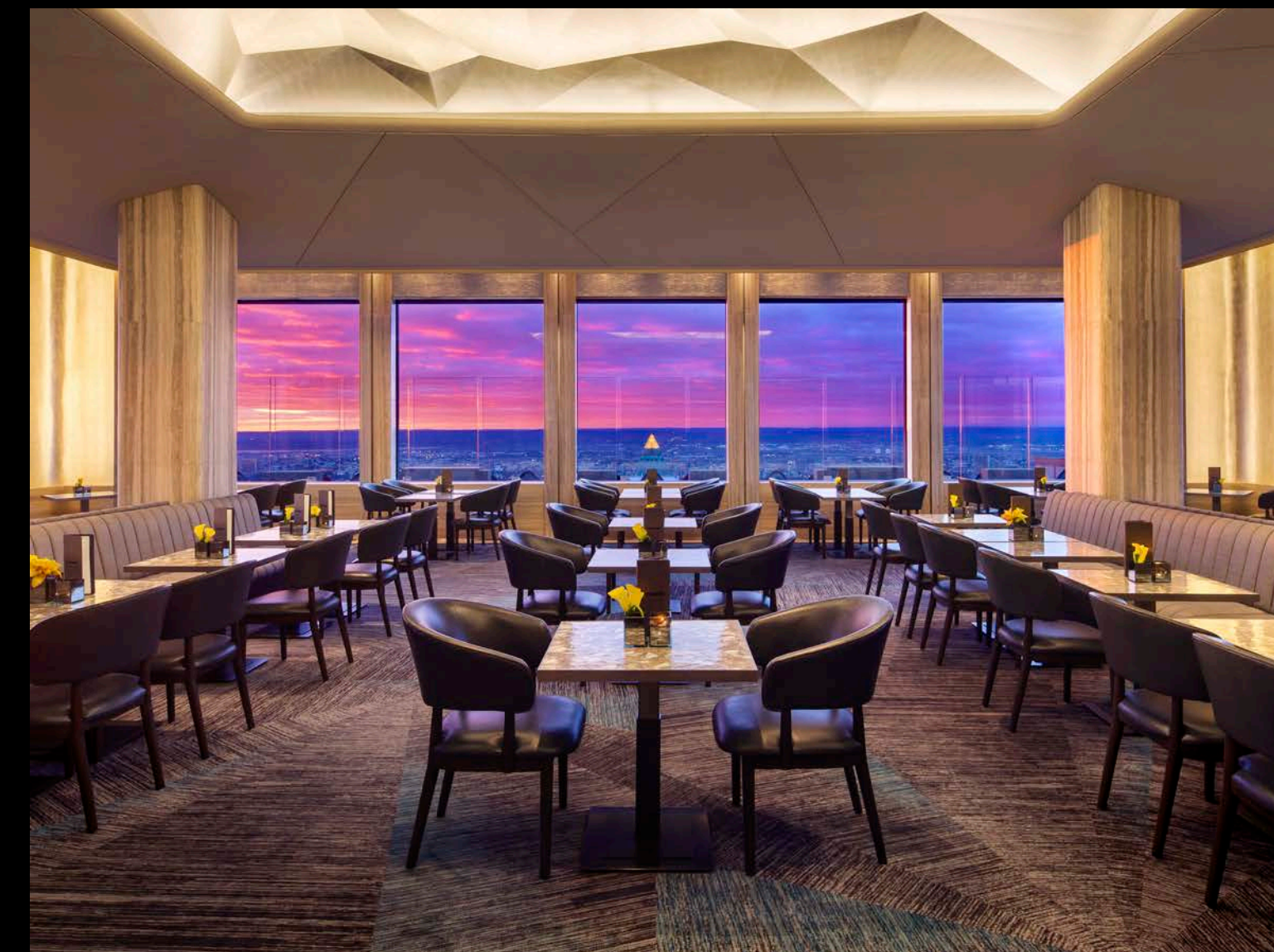


# BAR SIXTYFIVE

Nestled in the famed Rainbow Room sits this supremely elegant, sun-drenched restaurant and bar, ideal for shooting power lunches and discreet dinner meetings. Framed by the city views with the surrounding floor to ceiling windows.



30 ROCKEFELLER PLAZA  
65TH FLOOR  
SQ FT: 3,493  
CEILING HEIGHT: 12' 3"



# BAR SIXTYFIVE TERRACE

Perched 65 stories above Rockefeller Center, this inviting deck, just outside Bar SixtyFive, owns bragging rights as the highest outdoor terrace in New York City. The city skyline casts a dreamy glow here, and the Empire State Building is visible from just about every angle.

30 ROCKEFELLER PLAZA  
65TH FLOOR  
SQ FT: 910  
CEILING HEIGHT: THE SKY



# THE GALLERY

Connecting the iconic Rainbow Room to Bar SixtyFive, this elongated spacious room offers epic views of the Empire State Building and lower Manhattan. The bar and table seating can be easily removed to reconfigure the space to your needs.



30 ROCKEFELLER PLAZA  
65TH FLOOR  
SQ FT: 2,530  
CEILING HEIGHT: 8' 6"

# PRIVATE DINING ROOM

Adjacent to the Gallery, this stately, yet intimate dining area features leather club chairs and a breathtaking view of the New York skyline. Quiet and impressive, it is an ideal spot for interviews or small, important gatherings. The furniture can be removed to reconfigure the space.

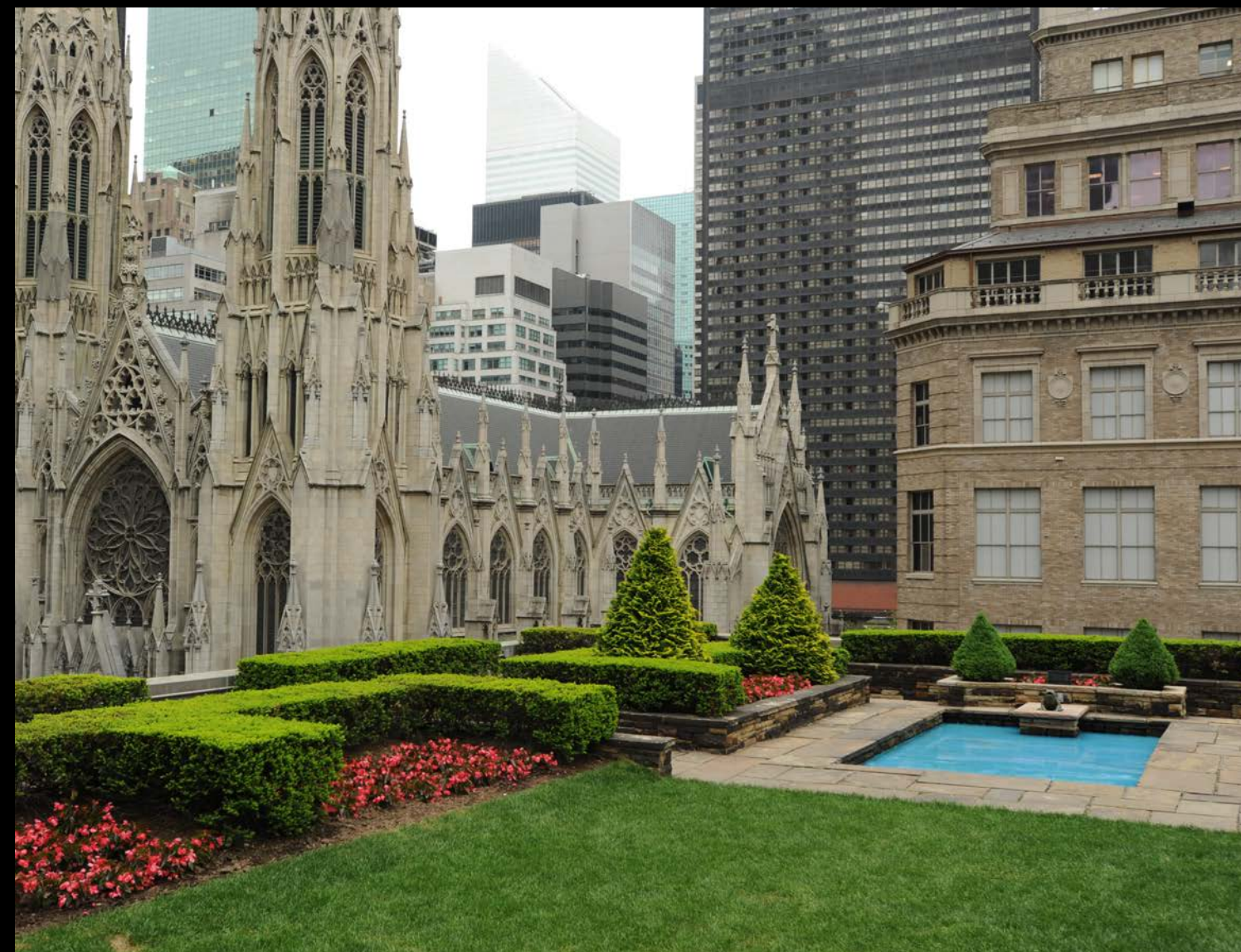
30 ROCKELLER PLAZA  
65TH FLOOR  
SQ FT: 360  
CEILING HEIGHT: 8'6"



# 620 LOFT & GARDEN

A bonafide Manhattan gem: this extraordinary rooftop location boasts some of the most cinematic views in town—from the taxis along Fifth Avenue to the striking spires of St. Patrick’s Cathedral. Exquisite manicured lawns and hedges, tasteful fountains and a luxurious reflecting pool evoke the Gilded Age barons that once reigned here. A customizable interior space is kitted out with wall-to-wall windows, flooding the room with natural light. The best of Rockefeller Center is always within view, from the famed Prometheus Statue, Radio City Marquee to the Rockefeller Center Christmas Tree and Rink. Whether you’re shooting a wedding scene or fashion spread, telegraph luxury here.

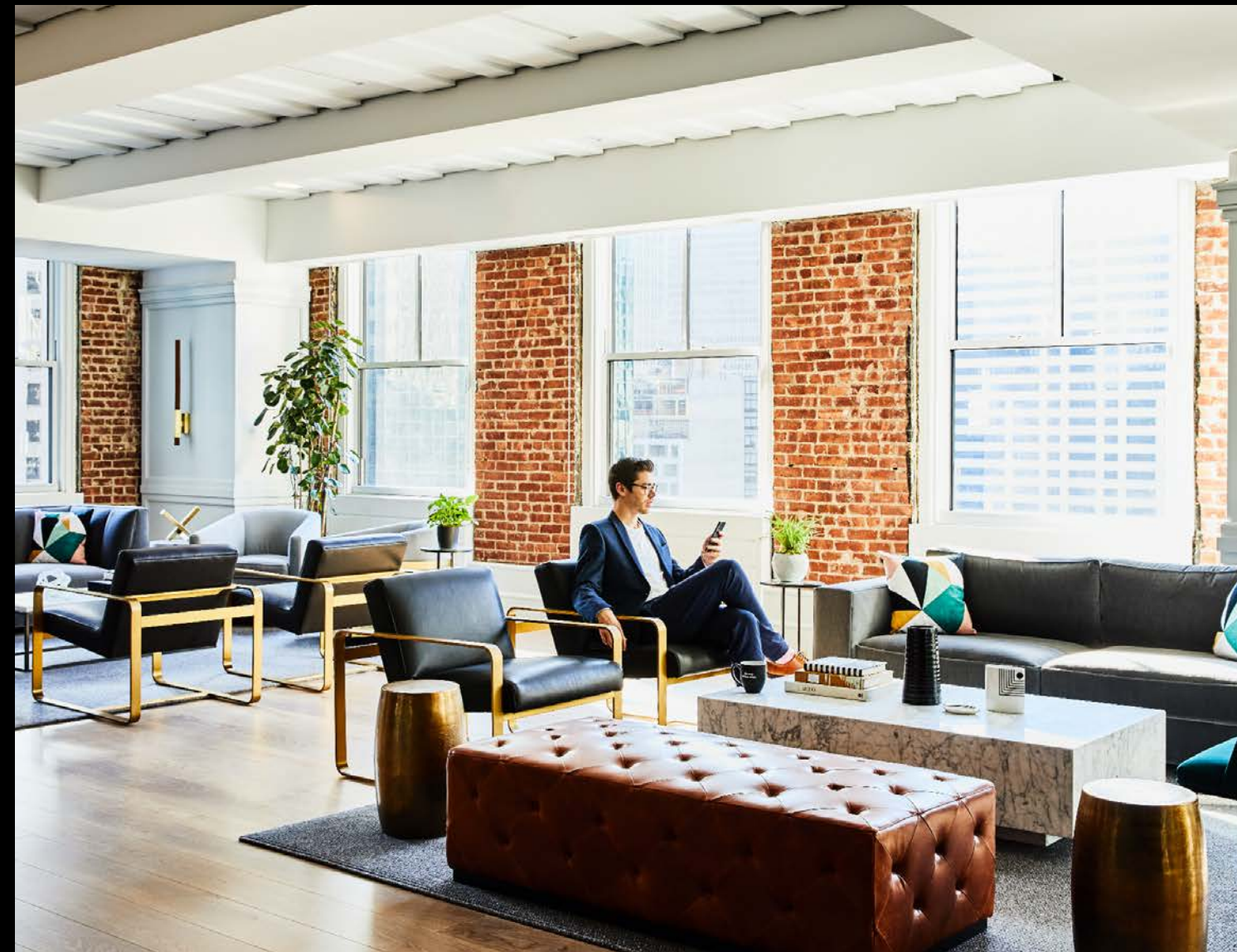
620 FIFTH AVENUE, 7TH FLOOR  
EXTERIOR GARDEN SQ FT: 912  
INTERIOR LOFT SQ FT: 5,624





# STUDIO GATHER

A conference, meeting and work space that weds high-end contemporary design with old school New York flair with exposed brick, grand pillars that double as support beams. An impressive, conducive space for film and photo shoots.



45 ROCKEFELLER PLAZA  
27TH FLOOR  
SQ FT: 7,840  
CEILING HEIGHT: 8'10"

# CLUBHOUSE

Rich, moody and refined, the ZO Clubhouse oozes low-key power with luxe tobacco leather armchairs and jewel tone finishes. Occupying two floors and kitted out with a full barista setup, meeting rooms, and even nap pods, this is an impressive, inviting space for shoots that require a luxe professional look. Both East and West sides boast access to an outdoor terrace, each boasting weeping views of Manhattan. The upstairs seating area is available every day until noon, and the entire space is available after 9pm and weekends.

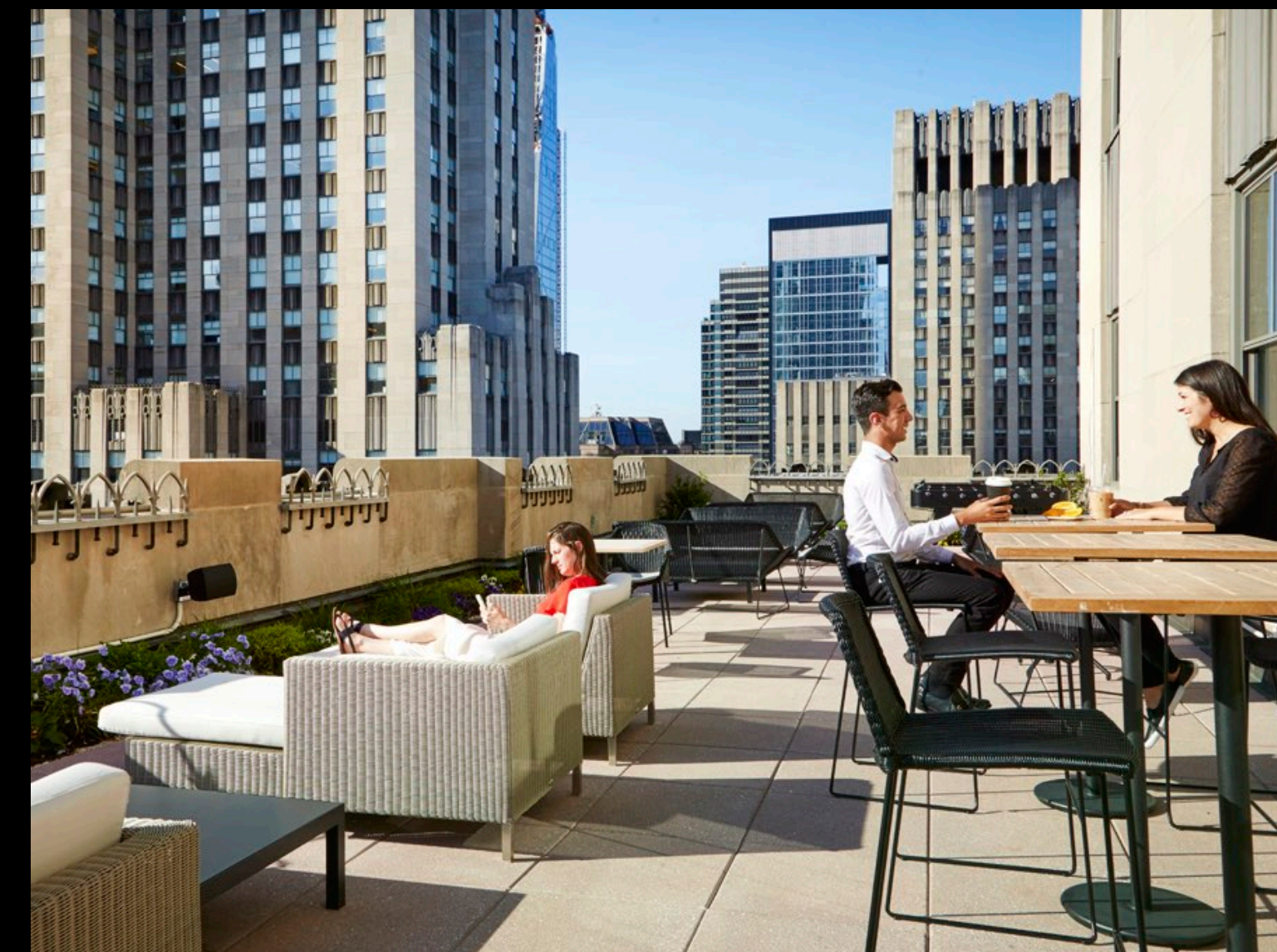
1 ROCKEFELLER PLAZA  
33RD FLOOR  
SQ FT: 4,500  
CEILING HEIGHT: 14'



# CLUBHOUSE TERRACE

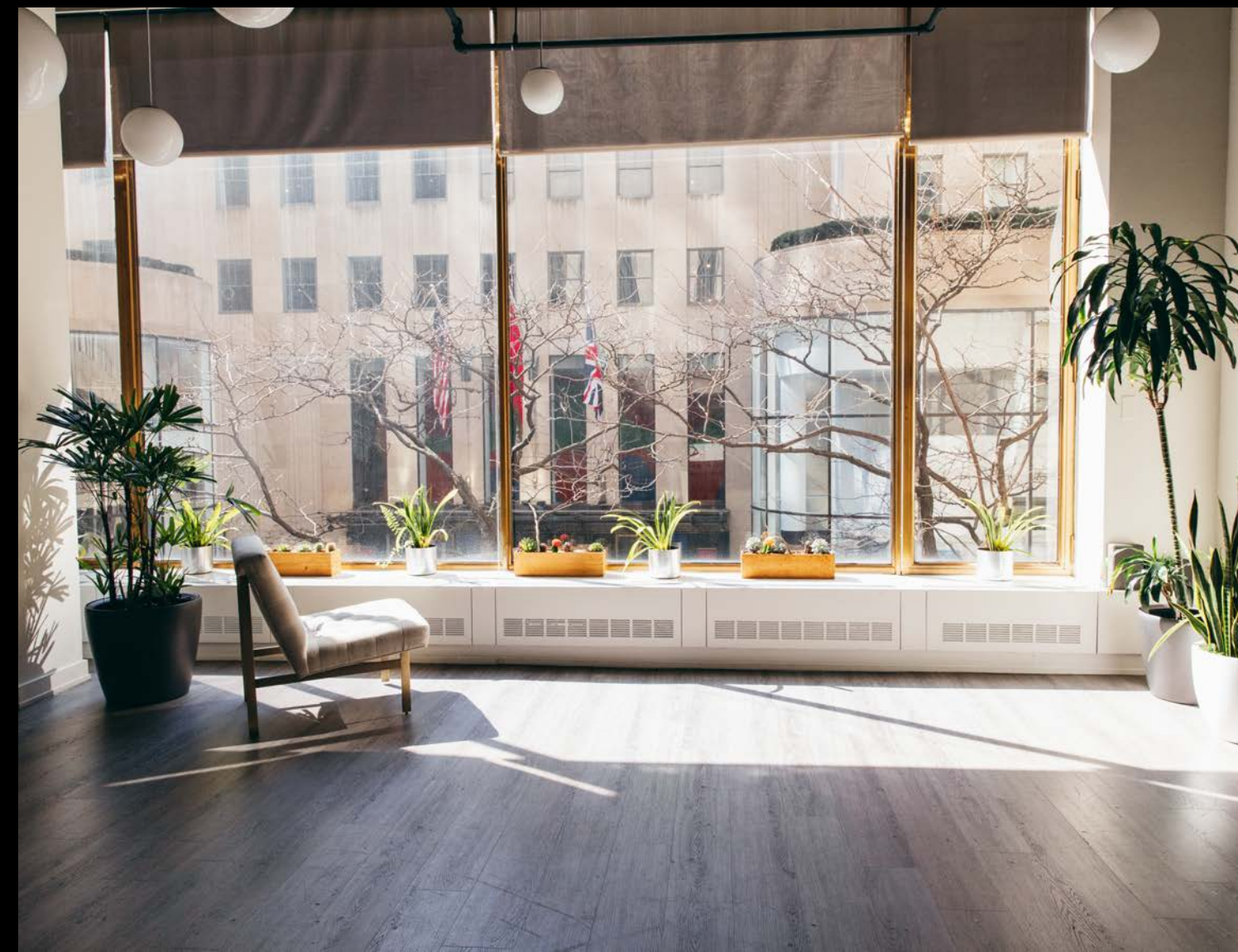
Perched 33 floors above Rockefeller Center sits this sprawling outdoor patio, outfitted with rows of chaise lounge chairs and tables. Accessible on both East and West sides of the building, the Terrace is a dream spot to capture your exterior shots of Manhattan and its most prominent landmarks, including the Empire State Building and Hudson River.

WEST TERRACE SQ FT: 3,125  
EAST TERRACE SQ FT: 1,760  
VIBE: VIEW TO A THRILL



# LOUNGE

Quiet, private and generously bathed in natural light thanks to its floor-to-ceiling windows, this sanctuary on the mezzanine level of 30 Rockefeller Plaza is a great option for interviews and intimate photo shoots.

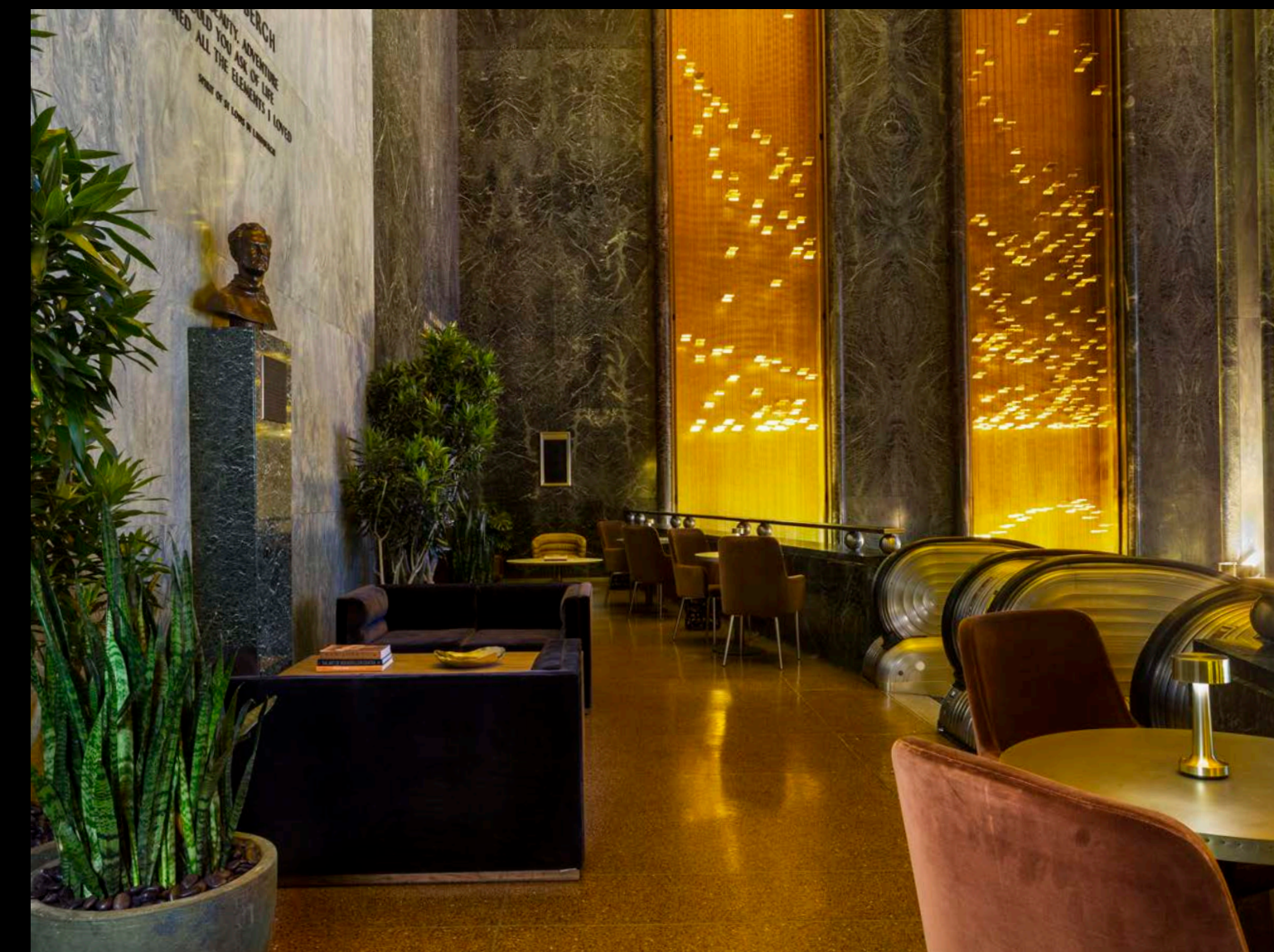
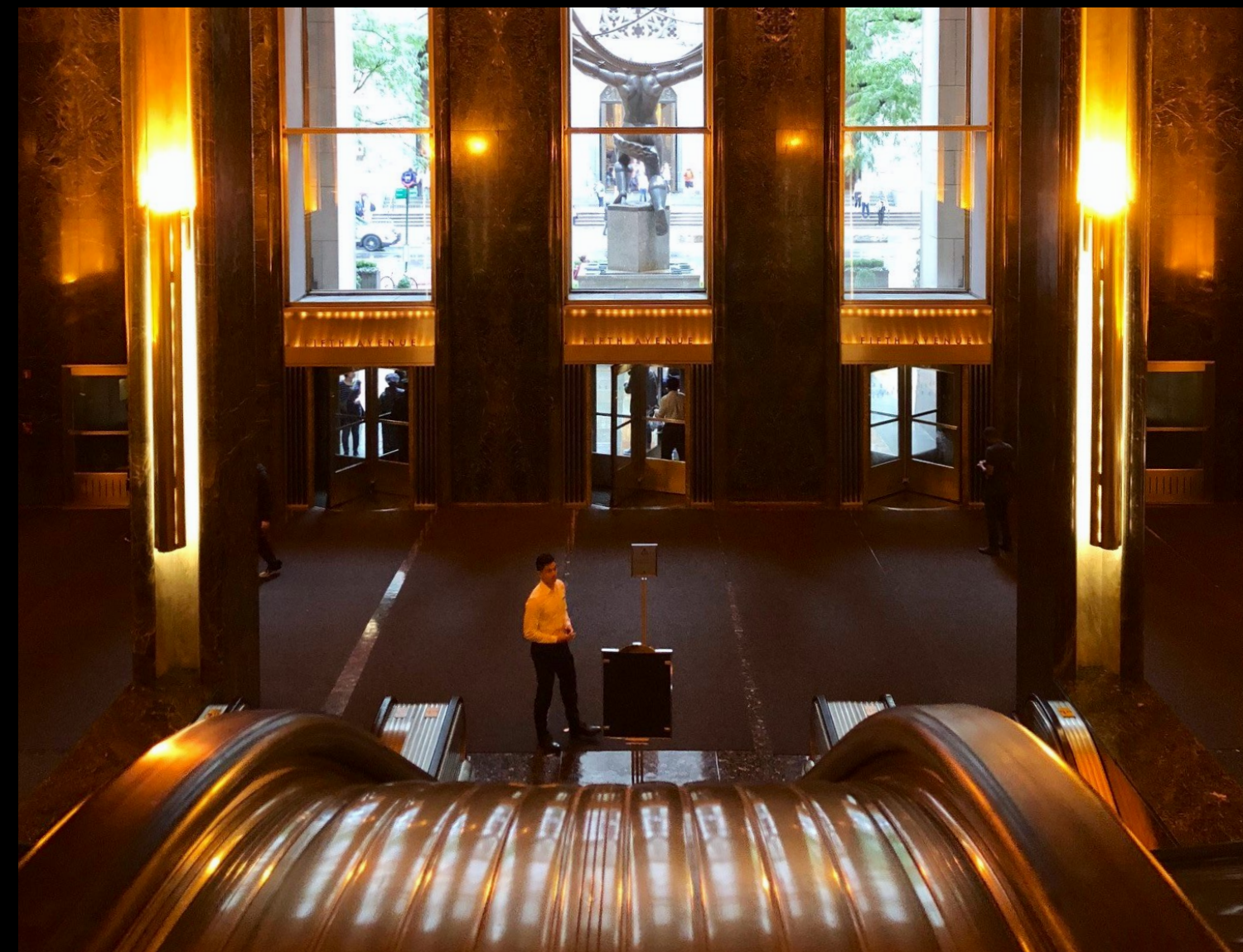
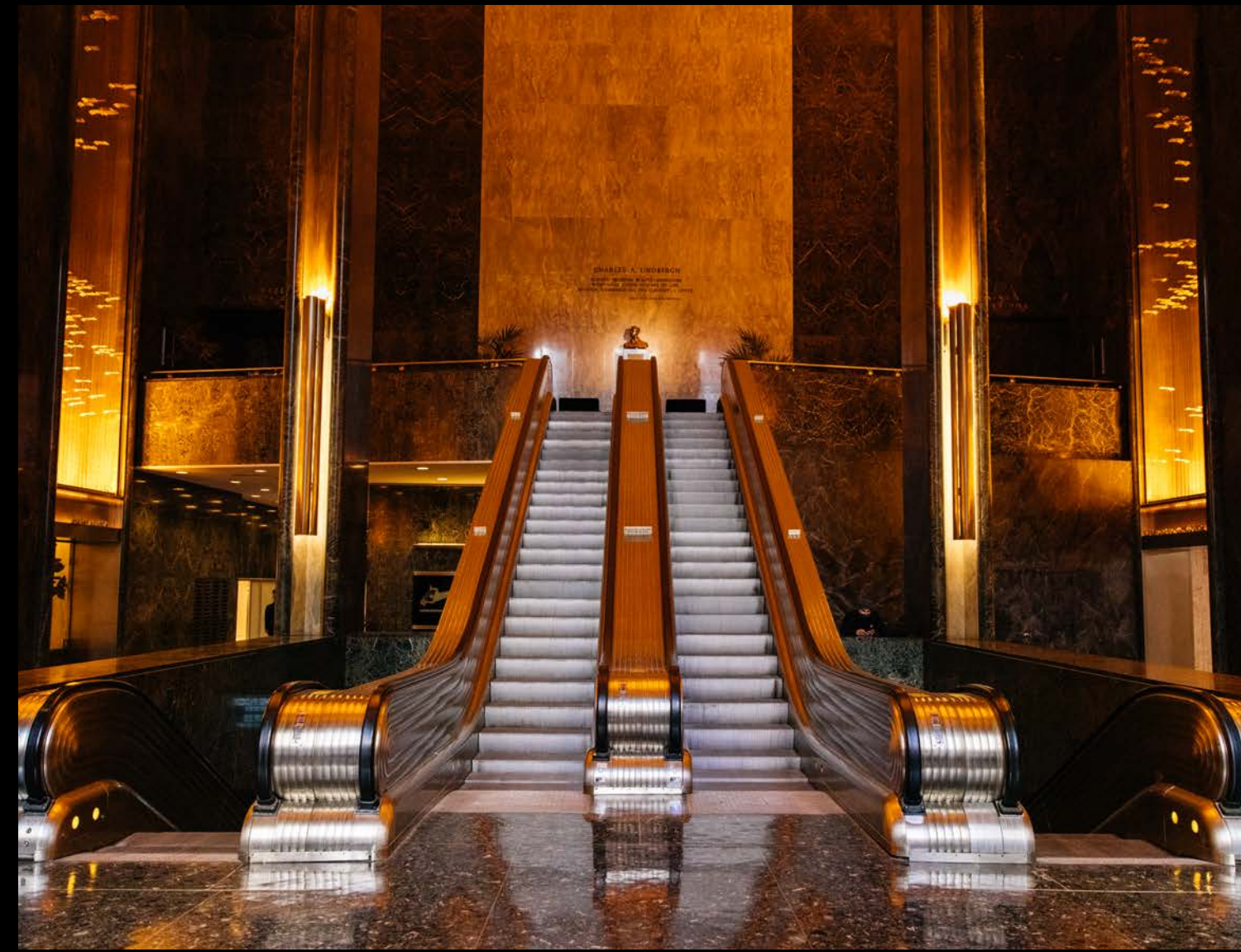


30 ROCKEFELLER PLAZA  
MEZZANINE  
SQ FT: 650  
CEILING HEIGHT: 17'



# LIBRARY

Sexy, sleek and elevated, this is where you might film a discreet rendezvous or illicit phone call. It captures the Art Deco chic that defines Rockefeller Center: soaring ceilings, brass details, modern curves. Located on the Mezzanine Floor of 30 Rock, the iconic statue Atlas and St. Patrick's Cathedral are both visible through the windows. Moody and malleable, the furniture can be replaced for a more authentic period set.



45 ROCKEFELLER PLAZA  
MEZZANINE  
SQ FT: 1,500

# RADIO PARK

This startling half-acre rooftop oasis atop Radio City Music Hall offers a dreamy woodland escape from the skyscrapers that surround it. There are meandering pathways and seated nooks shaded by wild trees, a spacious garden lawn, terraces and even a stage.

Opened in September of 2021, and accessible only to tenants of Rockefeller Center, this is a highly original and largely unseen space with one-of-a-kind backdrops and views.

1260 SIXTH AVENUE  
9TH FLOOR  
SQ FT: 24,000



# ENTRANCES

A paragon of Art Deco design, Rockefeller Center remains one of the one of the most recognizable destinations in the world, even a century after it was built. Those celebrated motifs and sculptures are on grand display at all our entrances, which make for archetypal “New York” backdrops.

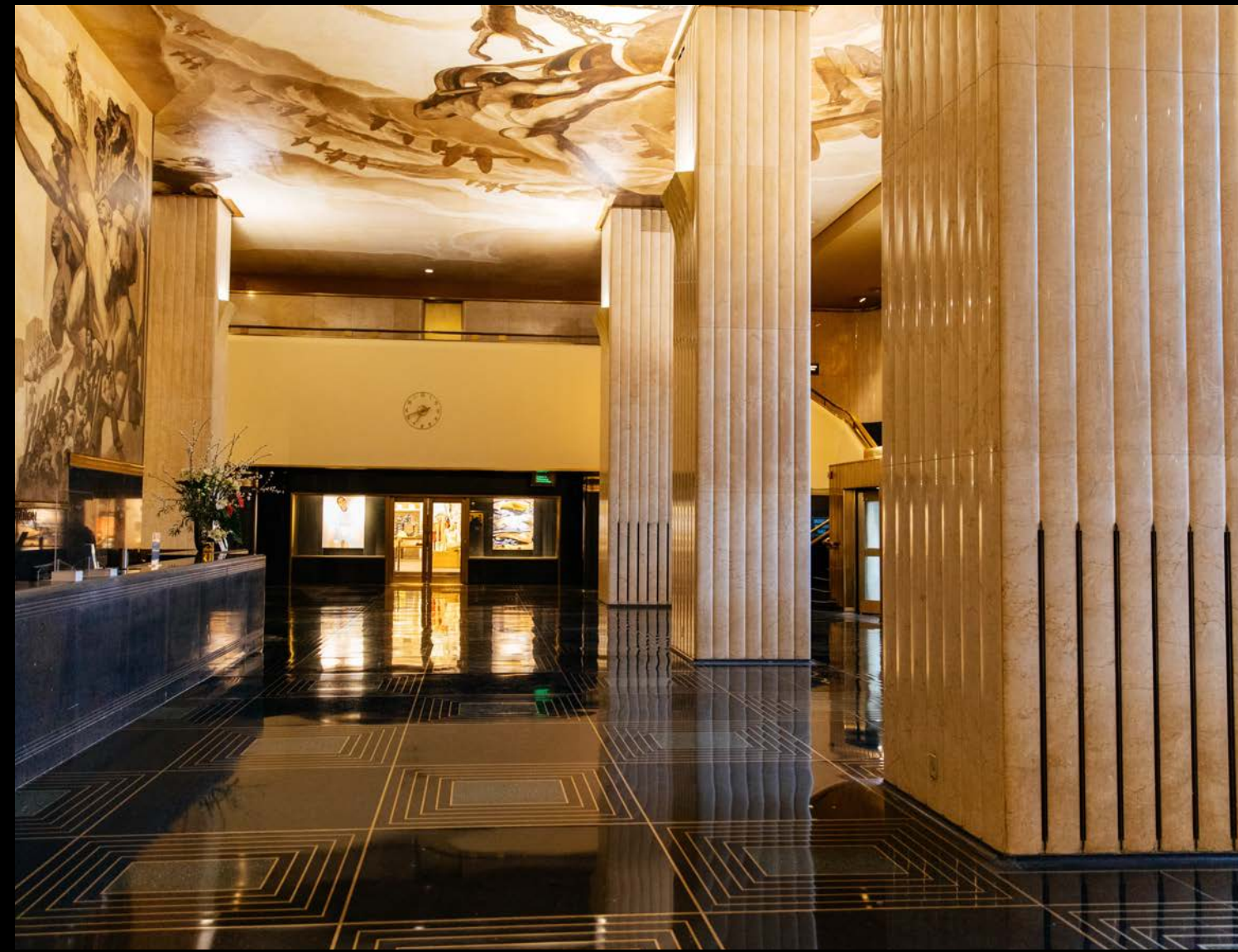


- 1 ROCKEFELLER PLAZA
- 30 ROCKEFELLER PLAZA
- 45 ROCKEFELLER PLAZA
- 50 ROCKEFELLER PLAZA
- 610 FIFTH AVENUE
- 620 FIFTH AVENUE
- 630 FIFTH AVENUE
- 1230 SIXTH AVENUE
- 1250 SIXTH AVENUE
- 1270 SIXTH AVENUE



# LOBBIES

Our majestic lobbies adorned with bold, confident lines, cinematic murals, and jaw-dropping sculptures. If your scene calls for the quintessential Manhattan lobby—grand, confident, iconic—you’ve come to the right place.



- 1 ROCKEFELLER PLAZA
- 30 ROCKEFELLER PLAZA
- 45 ROCKEFELLER PLAZA
- 50 ROCKEFELLER PLAZA
- 620 FIFTH AVENUE
- 610 FIFTH AVENUE
- 630 FIFTH AVENUE
- 1230 SIXTH AVENUE
- 1250 SIXTH AVENUE
- 1270 SIXTH AVENUE

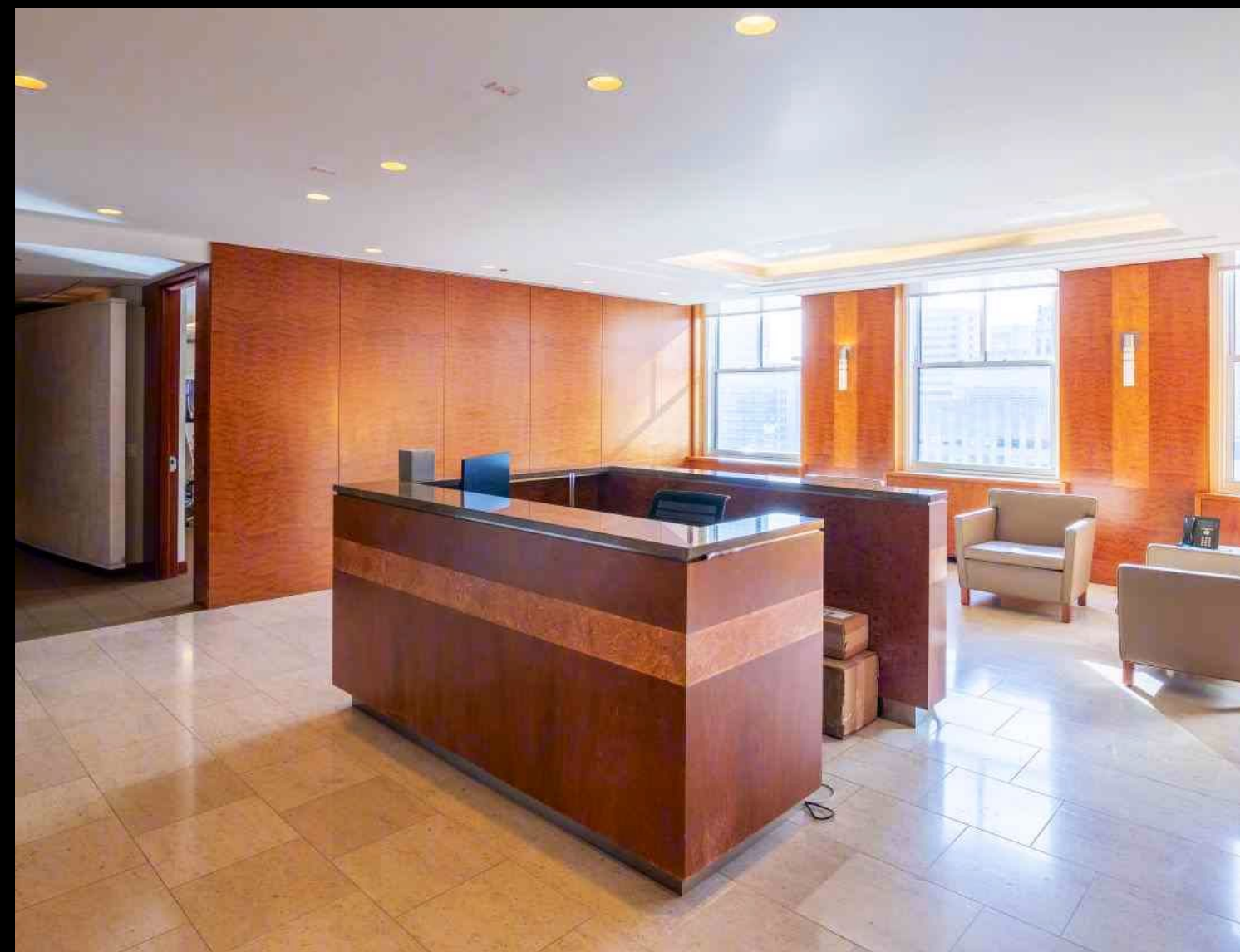




# OFFICE SPACE

Our impressive campus boasts 19 buildings stretching 22 acres of midtown, easily accessible by car and all public transportation. Whatever your needs are, we've got you covered.

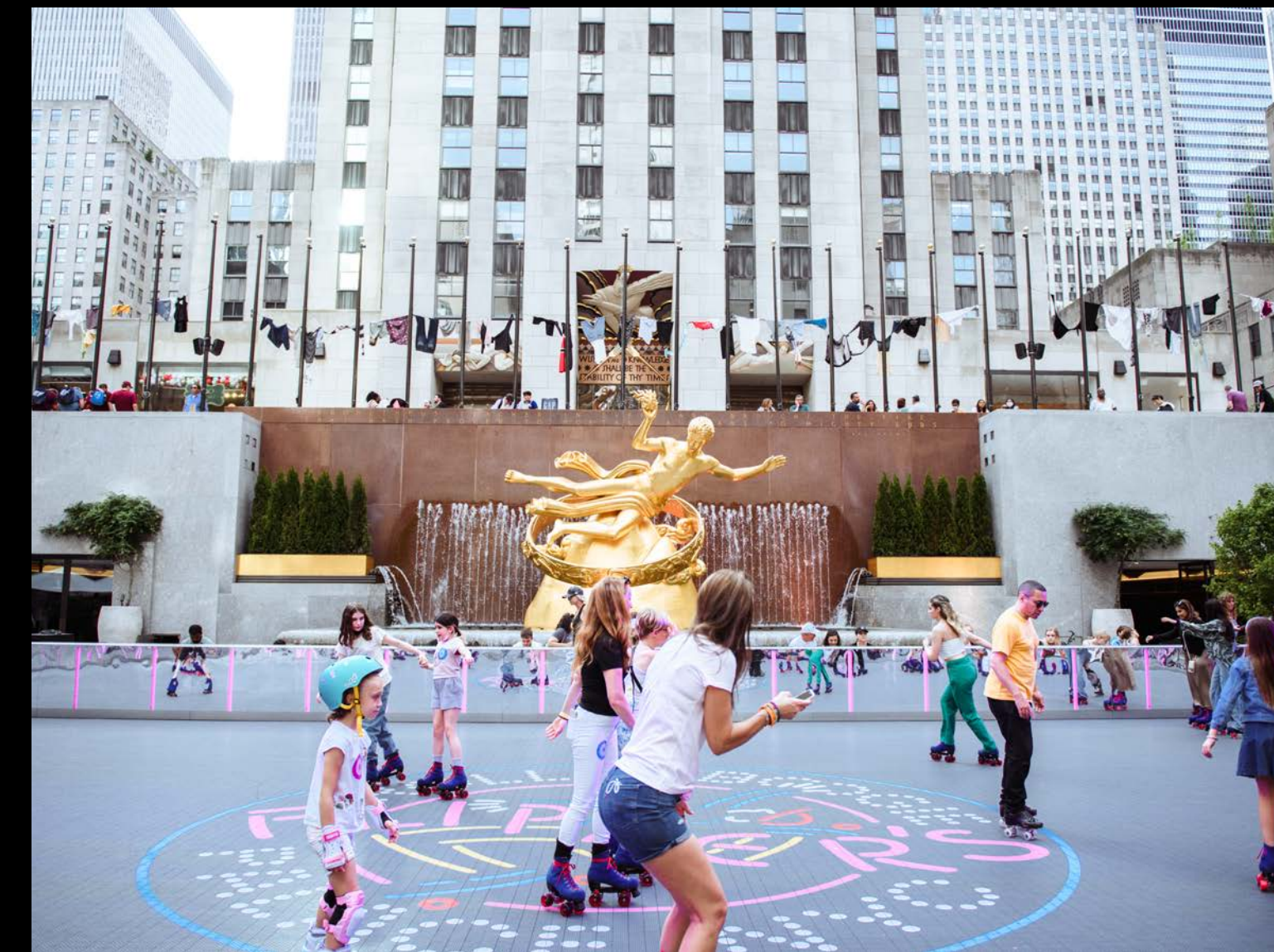
1 ROCKEFELLER PLAZA  
10 ROCKEFELLER PLAZA  
30 ROCKEFELLER PLAZA  
45 ROCKEFELLER PLAZA  
50 ROCKEFELLER PLAZA  
620 FIFTH AVENUE  
610 FIFTH AVENUE  
630 FIFTH AVENUE  
1230 SIXTH AVENUE  
1250 SIXTH AVENUE  
1270 SIXTH AVENUE



# THE RINK

As beloved as it is renowned, the Rink at Rockefeller Center is a New York institution, instantly identifiable thanks to the gilded Prometheus statue presiding over the festivities. While the plaza is devoted to ice skating from late fall through the winter, this spring, for the first time since 1940, the plaza was converted to a roller-skating rink, which will remain open until October. You won't find a more quintessentially New York activity than skating at Rock Center.

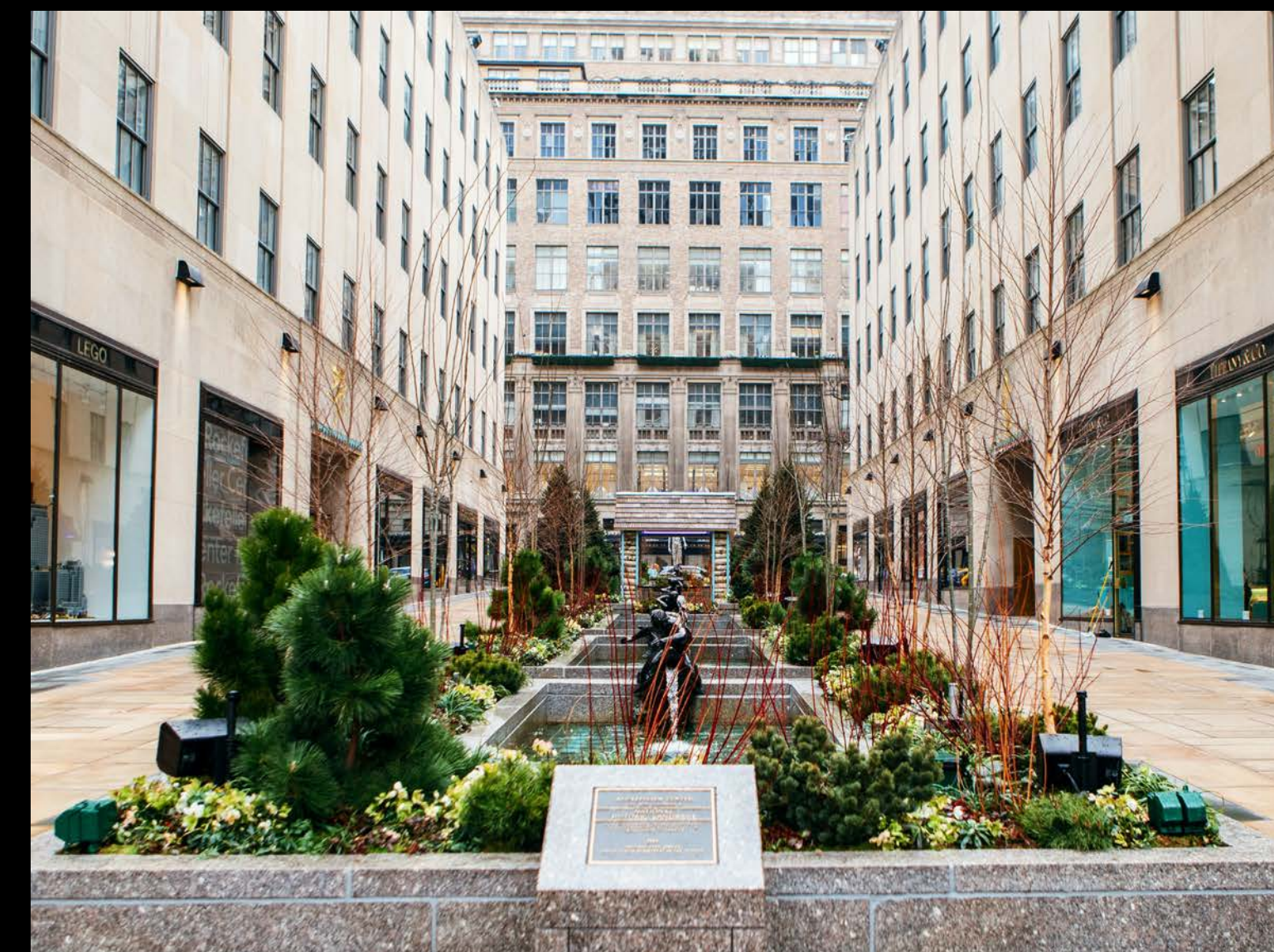
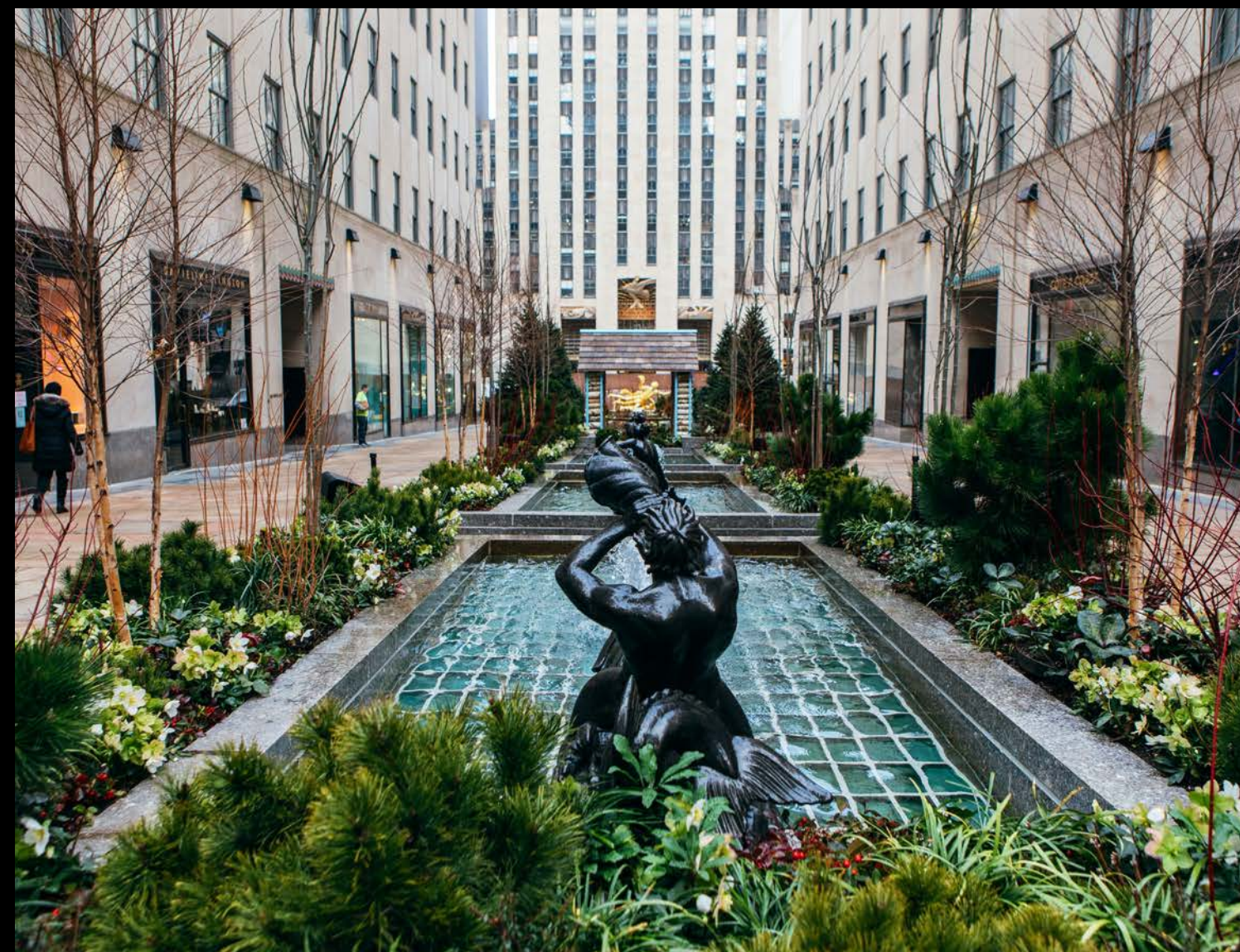
CENTER PLAZA  
FIFTH & SIXTH AVENUE,  
50TH STREET & 51ST STREET



# CHANNEL GARDENS

The lush centerpiece of Rockefeller Center. Situated between Fifth Avenue and 30 Rockefeller Center and bookended by the Rink and the Prometheus statue, this popular promenade features six rectangular pools flanked by a bevy of bronze mythological fountainheads. The Channel Gardens are bordered by rotating seasonal botanical displays, making them an idyllic escape, meeting spot and photo op.

FIFTH AVENUE BETWEEN  
49TH & 50TH STREET



# ROCKEFELLER CENTER PLAZA

Arguably the most recognizable stretch in all of New York. Encompassing three city blocks between Fifth Avenue, Avenue of the Americas (6th Avenue), West 48th to West 51st Streets, the Plaza plays home to iconic Big Apple landmarks like The Rink, the gilded Prometheus statue, and during the holidays, the legendary Christmas Tree. Can't find a better stage for establishing a New York storyline.

CENTER PLAZA  
NORTH PLAZA  
SOUTH PLAZA  
NORTH ESPLANADE  
SOUTH ESPLANADE



# FILM & PHOTO FRIENDLY RETAILERS

Nothing beats shopping at Rockefeller Center. Did you know you can capture that razzle dazzle on location at one of our many film-and-photo-friendly retailers and restaurants? There's a location for every vibe, both indoor and outdoor. Among them: Pebble Bar, the city's newest, chicest happy hour hotspot; and Ace's Pizza, a low-key, to-go slice house kitted out with old school signage. At Sharks, black leather clubchairs and neon lights cast an 80's-era glow over this unique pool hall; and Pall Mall Barbers is a throwback to fedora-era grooming. Whatever the mood board or shot list called for, we've got you covered. Here's just a sample of Rockefeller Center's diverse, accessible, and accommodating commercial locations ideal for your next shoot.



**Lodi** Sleek grab-and-go cafe is modeled to look like a classic Italian train station kiosk.



**Ace's Pizza** Quintessential 'I love New York' pizzeria, replete with red checker napkins.



**Pebble Bar** Swanky watering hole is tucked away in a historic four-story townhouse.



**City Winery** Always buzzy alfresco outpost is kitted out with barrels-as-tables.



**Pall Mall Barbers** Upscale men's grooming mecca is where the nattiest in town get their trims.



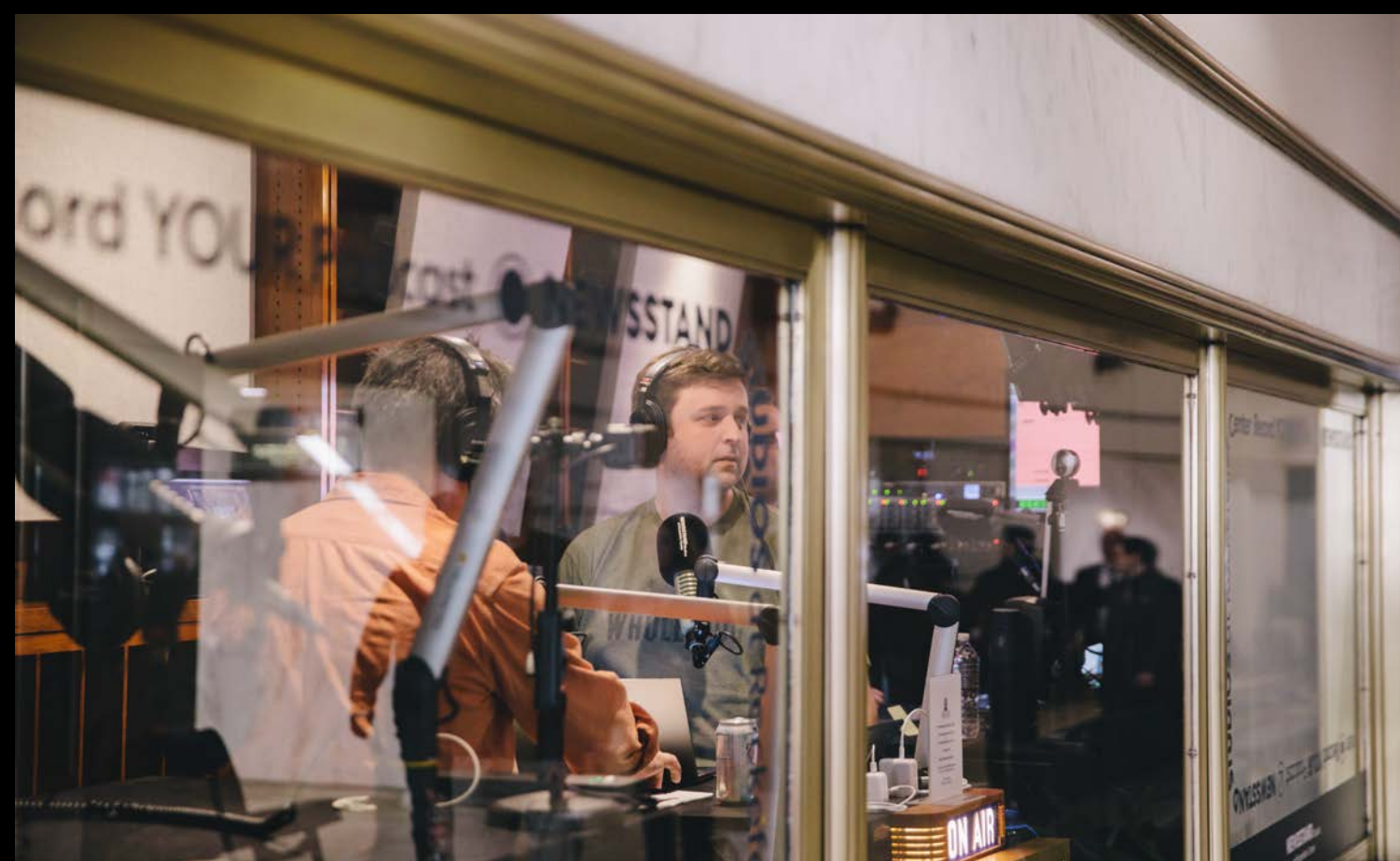
**FAO Schwarz** The iconic toy store remains a fantasia of eye-popping colors and goodies.



**Flipper's Roller Boogie Palace** A technicolor, only-in-New York destination for roller rink-ready fashion and gear.



**Shark's Pool** "Mansion-style rooms" to rack 'em up and cue your shots.



**Newsstand Studios** Fully loaded podcast studio in the 30 Rock lobby is equipped with vintage on-air sign.



**Rough Trade** Hipster record store is a heavy helping of Brooklyn in the heart of midtown.

# PRODUCTION GUIDELINES



# PRODUCTION GUIDELINES

## ACCESS

The Plaza Streets at Rockefeller Center are open 24 hours a day to the public, at no time may a shoot block access to or from any of the building entrances or retail stores on site. Intermediate holds for filming can be negotiated during off hours. Floor plans and script pages when appropriate must be submitted for approval. All equipment must be kept contained and tight.

## ELECTRIC

Access to electricity is available throughout Rockefeller Center; a generator will not be allowed for any shoots. A certified electrician at cost must be on site whenever tied into power.

## FIRE CODE

All candle flames must be protected on the sides and bottom (i.e. votive holders, hurricanes, lanterns, etc.). Unprotected taper and pillar candles are not allowed. Production setup cannot block a fire exit at any time.

## GROUNDS

The rented area must be protected from damage during load-in, load-out, and throughout your shoot.

## INSURANCE

All clients must provide evidence of general liability insurance. The specific terms and conditions will be outlined in the location agreement. A certificate of insurance is required upon signing.

## LANDMARK STATUS

Rockefeller Center is a designated National Historical Landmark. As such, all building exteriors and the entire plaza area are protected from development or change. Nothing can be affixed to the buildings or any other permanent structure.

## LOADING DOCK

The entrance for the loading dock is the same for all the buildings in Rockefeller Center. The address is 41 West 50th Street (between 5th and 6th Avenues — north side of the street). Truck dimensions may not exceed 24' long and 12' high. A loading dock form must be submitted ahead of time. All vehicles must check in at the top of the ramp. All people in the vehicle must have valid photo ID. Once the vehicle is cleared for entry they will proceed down the ramp and directed to the freight elevator of the building. Production trucks may not park in the loading dock. They can access for load in and load out only.



# PRODUCTION GUIDELINES

## PARKING

There is no parking at Rockefeller Center. There is a private parking garage located on 48th Street between Fifth and Sixth Avenue. Production trucks must park on the further most west and east sides of 51st & 48th Streets.

## PERMITS

Rockefeller Center is a private property; as such, city permits are not required for the filming on site. All images of Rockefeller Center and its iconic artworks are protected by copyright. License image usage must be negotiated ahead of time.

## SECURITY

Dedicated security staff will be assigned to shoots at cost. The amount of security personal required will be based on the size of production at the discretion of Rockefeller Center. If you would like to bring in outside security (in addition to ours) it will need to be approved.

## TENTING

In general, Rockefeller Center discourages tents on the Plaza due to safety and aesthetic concerns.

## TRASH REMOVAL

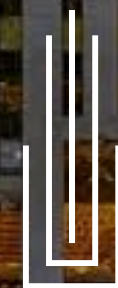
All garbage (dry and wet) must be removed at the end of a shoot by crew. There are two dumpsters in the loading dock.

## VENDORS

Rockefeller Center works with a series of preferred vendors. Union electricians, painters and carpenters are located on-site to work in conjunction with any production.

QUESTIONS & INQUIRES:

[RCFILMANDPHOTO@TISHMANSPEYER.COM](mailto:RCFILMANDPHOTO@TISHMANSPEYER.COM)



ROCKEFELLER CENTER®